

Trustee & Member Recruitment Pack



Exeter Learning
Academy Trust

Creating our future together



Are you interested in investing in children's futures and helping to make an equitable society whilst developing your own professional skills?



We are looking for Trustees and Members to join our Multi Academy Trust of 4 primary schools in the heart of Exeter.



On behalf of Exeter Learning Academy Trust (ELAT), we would like to thank you for your interest in becoming a Trustee or Member.

We are a values driven Trust, believing in the right of every child to have access to an excellent education and stimulating and enjoyable life experiences, regardless of their starting point or background. We are relentless in our ambition for our children and want everyone in our trust, both adults and children, to be the best they can be. We believe in investing in our staff and creating cultures of success, not failure, through building strong and trusting relationships.

We are a geographically close family of schools catering for pupils from 2-11 but, despite our close locality, our schools serve very different communities and this is reflected in their individuality.

We have 3 tiers of governance within our Trust:

- **Members**—they are the guardian of the values, ethos and mission of the Trust and hold the Trustees to account
- **Trustees**—they govern strategically across the whole Trust and hold the Executive to account, set the strategic direction of the Trust and oversee the Trust's financial performance.
- **Local Governors**—they govern at a school level and are given delegated duties by the Trust Board and are made up of representatives from staff, parents and the local community.

We are looking for new **Trustees** and **Members** to join us and we would love to hear from businesses and individuals who share our vision and values. If you want to find out more about us, please visit www.exeterlearningacademytrust.co.uk.





The Role of The Trustee

What can I expect to gain from becoming a Trustee?

Trustees make a valuable contribution to children's education, opportunities and futures. Being a Trustee is a hugely rewarding role and you will be registered as a company director. It will give you the chance to make a real difference to young people, give something back to the local community and use and develop your skills in a board-level environment. You will also be joining the largest volunteer force in the country: there are over a quarter of a million volunteers governing schools in England. Trusts like ours, need Boards that have a balance and diversity of knowledge, skills and experience to enable it to be effective. There is no requirement for you to have an understanding of the education system, just the necessary skills, character and time to contribute. There is plenty of training available to help you learn about education.

As a Trustee at ELAT you can expect to:

- Develop and utilise your skills in a board-level environment.
- Make a valuable contribution to education and the community.
- Use your own experience of education and life beyond school to inform conversations.
- Support and challenge the Trust so that it improves for pupils and staff.
- Bring your unique experiences, perspectives and insights into decision-making in the interests of the children.

What skills do I need to be a Trustee?

Our Trustees are all volunteers working for the benefit of the children in our schools. They have a variety of backgrounds and live in a number of locations across the Southwest and beyond. We would be delighted to hear from you if you:

- Are committed to making a difference for children and young people
- Are passionate about the impact of education on society
- Believe in equity and want to help improve life chances for all
- Are able to have courageous conversations and provide challenge
- Have an open and enquiring mind
- Can collaborate, build strong relationships and work well with others

How much time will I need to give to the role?

- The Trust board meets 6 times a year, during term time only
- Trustees are asked to sit on one committee that meets once per term
- We encourage our Trustees to visit/talk to the leader of their link school at least once per year
- You will need time to read papers ahead of meetings and attend training if necessary

Do I need to live in Exeter to be a Trustee?

All our meetings have a remote video conference link, enabling Trustees to attend from other areas of the county. We have a travel allowance for face to face meetings and events.





The Role of Members

What do Members do in a Multi Academy Trust?

Members are often seen as the guardians of the Trust—they approve the appointment of Trustees and ensure that by doing so, the Trust remains true to its vision and values.

The role of members is more discrete than Trustees. They are tasked with assessing if the Trust Board is performing well and that the Trust is meeting its charitable objects. Members can be individuals, or organisations. For example, in church schools, the diocese are always a member, rather than a named individual. A Multi Academy Trust must have at least 3 members, and ideally at least 5. Members have a limited number of responsibilities which you can learn more about [here](#) on page 6.



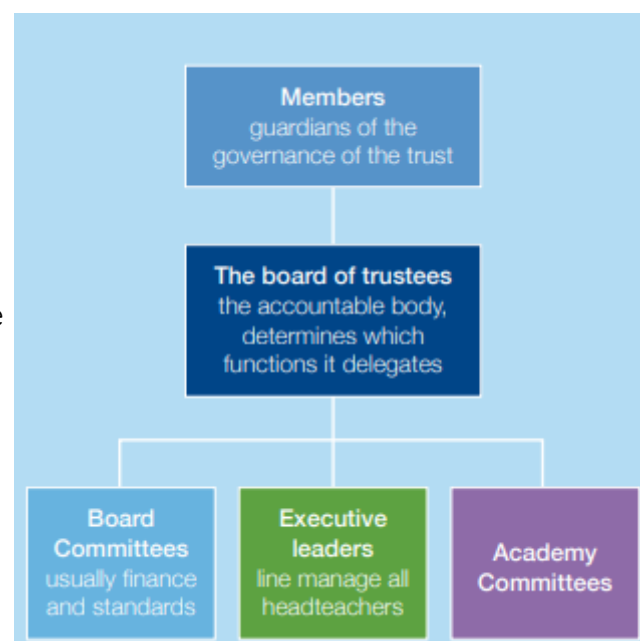
How much time will I need to give to the role?

Members meet less often than Trustees. Within our Trust our members meet 3 times a year—one of these is the AGM and the other 2 meetings allow the Chair of Trustees and CEO to update members on the work of the Trust.

Do I need to live or work in Exeter to be a Member?

We run all our meetings with the option of remote attendance so it is not necessary to live or work in Exeter.

However, we are keen to strengthen relationships with local businesses and organisations. You may be interested in building a link between your company and education, in which case we would love to hear from you.



How to Apply

To be a Trustee or Member you must :

- be aged over 18
- not be a current pupil at the school
- not have been declared bankrupt
- not be the subject of a bankruptcy restrictions order or an interim order
- not have been disqualified from holding office as a governor
- not have been disqualified from being a company director and/or a charity trustee
- not have been removed as a trustee for a charity by an order made by the Charity Commission or the High Court on the grounds of misconduct or mismanagement in administration of the charity

We are committed to safeguarding our children and all our governors, Trustees and Members are subject to an enhanced DBS (disclosure and barring service) check.

If you are interested in finding out more or would like to speak to someone from the Trust, please contact clerk@elatschools.com. You can also learn more about the roles from the Government website: [Governance handbook and competency framework - GOV.UK \(www.gov.uk\)](https://www.gov.uk/government/publications/governance-handbook-and-competency-framework).

If you are interested in applying for a role then please complete the application form which can be found [here](#) and return to clerk@elatschools.com.

Thank you for taking the time to consider this role and we look forward to hearing from you.





**Exeter Learning
Academy Trust**

Creating our future together

Thank you for your interest and we
look forward to hearing from you.

www.exeterlearningacademytrust.co.uk